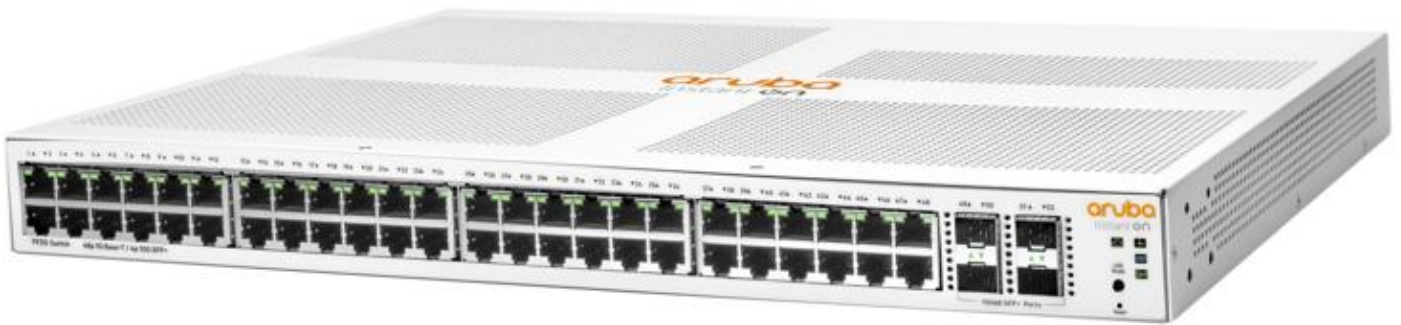


# Aruba Instant On 1930 48G 4SFP/SFP+ Switch (JL685A)



## What's new

- Seven advanced smart managed Layer 2+ Gigabit switches for high-performance connectivity.
- Non-PoE and Class 4 PoE (i.e. PoE+) 8-, 24- and 48-port models for deployment flexibility.
- 1G/10G SFP+ ports on 24- and 48-port models for fiber connectivity.
- Aruba Instant On mobile app and/or cloud-based web portal for easy network management onsite or remotely.
- Option to manage your switches through local web GUI.
- Limited Lifetime Warranty.

## Overview

The Aruba Instant On 1930 switch series is designed for small and growing businesses that require enhanced performance to support bandwidth-demanding applications. The Aruba Instant On 1930 switch series seamlessly integrates with existing Instant On indoor/outdoor access points and can be centrally managed with the Instant On mobile app onsite or remotely. These cloud-managed layer 2+ Ethernet switches consist of 8-, 24-, and 48-port Class 4 PoE (i.e. PoE+) and non-PoE Gigabit Ethernet models, with 1G SFP slots on 8-port model and 1G/10G SFP+ slots on 24-/48G models for fiber connectivity.

## Features

### Simplify Network Deployment and Management for Small Organizations

The Aruba Instant On 1930 switch series features easy-to-use, out-of-the-box, plug-and-play deployment.

The series offers a complete portfolio of choices for increased small

business flexibility. It consists of seven models including 8G-, 24G-, and 48G-ports with and without class 4 PoE (i.e. PoE+).

The 24- and 48- port models include four SFP/SFP+ transceiver slots that support Gigabit or 10-Gigabit speeds for fiber connectivity.

The Aruba Instant On 1930 switch series can be deployed using two management modes – Instant On cloud-management (access via mobile app and/or web portal) and the local web GUI.

### **Keep Your Business Protected with Integrated Security Features**

The Aruba Instant On 1930 switch series supports energy efficient Ethernet for lower power consumption and an enhanced feature set for more robust operation.

Enhanced security features such as IEEE 802.1x, and VLANs guard your network from unwanted or unauthorized access.

Automatic denial-of-service (DOS) monitors and protects the network against malicious attacks.

Management security restricts access to critical configuration commands, offers multiple privilege levels with password protection.

### **Deliver High Performance**

The Aruba Instant On 1930 switch series delivers advanced functionalities including customizable like VLANs, link aggregation, Spanning Tree Protocols, and IEEE 802.1X access control.

8-, 24-, and 48-port configurations with a choice of non-PoE and Class 4 PoE models provides deployment flexibility that fits all small business environment. Class4 PoE options allow to power devices like IP phones, surveillance cameras and access points, without the cost of additional cabling.

The 24- and 48-port models include 1G/10G SFP+ ports for reliable fiber connectivity and other connections across longer distances.

The switch series is covered by the Limited Lifetime Warranty with 24x7 phone support for 90 days and chat support for the entire warranty duration.

## Technical specifications

## Aruba Instant On 1930 48G 4SFP/SFP+ Switch

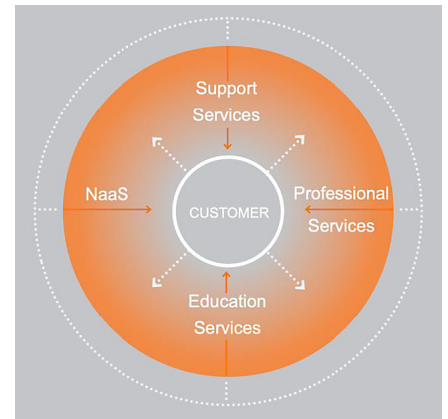
<b>Product Number</b>	JL685A
<b>Differentiator</b>	Advanced, smart-managed, fixed-configuration Gigabit switches designed for small businesses. Easy-to-deploy, secure and affordable. The first switches with Instant On “anywhere, anytime” configuration and management. Using the Instant On mobile app or the cloud-based web portal, quickly setup, monitor and manage the 1930 switch. Can also choose to manage the device through the local web GUI. This model has 48 10/100/1000 RJ-45 and 4 SFP 1/10GbE ports.
<b>Ports</b>	48 RJ-45 10/100/1000 ports, 4 SFP 1/10GbE ports
<b>Memory and processor</b>	ARM Cortex-A9 @ 800 MHz 512 MB SDRAM, 256 MB flash 1.5 MB packet buffer
<b>Throughput</b>	130.95 Mpps, maximum
<b>Switching capacity</b>	176 Gbps
<b>Management features</b>	Aruba Instant On Portal, Web browser, SNMP Manager
<b>Input voltage</b>	100 - 127 / 200 - 240 VAC
<b>Power Consumption</b>	36.9 W maximum, 16.8 W idle
<b>Product Dimensions (metric)</b>	4.39 x 44.25 x 28.24 cm
<b>Weight</b>	3.13 kg

For additional technical information, available models and options, please reference the QuickSpecs

## Aruba Global Services

Aruba Global Services simplifies and accelerates the network technology lifecycle, enabling your network to scale with better predictability and cost-effectiveness. Whether you operate your own network and need to improve your IT efficiencies or you want to offload some of the burden, we have the services you need to reach your goals.

Learn more about what Aruba Global Services has to offer at: [arubanetworks.com/services/](https://arubanetworks.com/services/)



## Support Services from Aruba

Support services reduce complexity and increase your team's productivity, ensuring you keep pace with technology advances and software releases, and obtain break-fix support required to keep your network running. Access to premium services means you have the right help at the right time.

## Professional Services from Aruba

With deep intellectual capital and purpose-built tools, our team delivers a range of standard and custom professional services designed to accelerate your value from Aruba technology.

**QuickStart Services** include:

- Planning, audit and assessment
- Intelligent Operations
- Architecture review and design

**Proactive Engineering Services** include:

- Customer Experience Management
- Deployment, migration, and knowledge transfer
- Network optimization

Our [Education Services](#) allow your team to come up to speed quickly.

## Aruba Network as-a-Service (NaaS)

Our NaaS solution, Aruba Managed Connectivity Services, part of the HPE GreenLake services family, simplifies network operations, accelerates equipment handling, and increases the value of your Aruba network. If you need expert guidance and automation-based operations for your team, please explore the NaaS approach from Aruba [here](#).

Make the right purchase decision.  
Contact our presales specialists.

[Find a partner](#)



Chat now (sales)



Call now



Buy now



Share now



Get updates

© Copyright 2023 Hewlett Packard Enterprise Development LP. The information contained herein is subject to change without notice. The only warranties for Hewlett Packard Enterprise products and services are set forth in the express warranty statements accompanying such products and services. Nothing herein should be construed as constituting an additional warranty. Hewlett Packard Enterprise shall not be liable for technical or editorial errors or omissions contained herein.

Parts and Materials: HPE will provide HPE-supported replacement parts and materials required to maintain the covered hardware.

Parts and components that have reached their maximum supported lifetime and/or the maximum usage limitations as set forth in the manufacturer's operating manual, product quick-specs, or the technical product data sheet will not be provided, repaired, or replaced as part of these services.

Image may differ from the actual product  
PSN1012839572ILEN, May, 2023.